

**NUMERIC**<sup>®</sup>

A Group brand | **legrand**<sup>®</sup>

THE DEPENDABLE POWER SOLUTION  
BACKED BY INDIA'S WIDEST  
SERVICE NETWORK

## VALURA

1 - 3 kVA  
Single Phase UPS



**NEW ENERGY  
TO POWER**

[www.numericups.com](http://www.numericups.com)

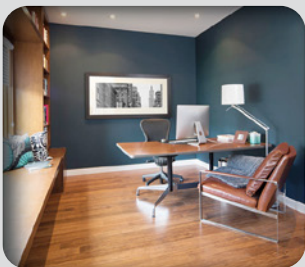
Valura UPS is a true double conversion online single-phase UPS with a 1-3 kVA range. It is a dependable power backup solution for even the most demanding environments, with a power factor of >0.99, <10% THDi, and Constant Current & Constant Voltage Charger. Valura is PEP certified and is suitable for a wide range of critical industry equipment, including workstations, ATMs, cash recyclers, POS systems, security surveillance equipment, and network accessories.



## FEATURES

- Power factor >0.99
- Generator compatibility
- Battery mode start-up
- Quick charging
- Auto restart facility
- Flame retardant cabinet
- ECO mode
- Constant Current & Constant Voltage Charger
- Upto 40°C operating temperature

## SEGMENTS



Residential & SOHO



Commercial



Healthcare



Infrastructure

## WHY NUMERIC

**35+**  
YEARS OF EXPERTISE

WIDEST  
SERVICE NETWORK  
**250+**  
DIRECT SERVICE CENTRES

PRODUCT RANGE FROM  
**600VA** TO  
**21MW**

**1** MILLION +  
UPS  
ACTIVE  
INSTALLATION BASE

**1800+**  
EMPLOYEES

**2** WORLD  
CLASS  
MANUFACTURING UNITS

TOP **3** UPS  
COMPANIES  
IN INDIA

UNDISPUTED  
LEADER\* IN **30**  
LI & 1P FOR CONSECUTIVE  
YEARS

## TECHNICAL SPECIFICATIONS

PARAMETERS	1 KVA	2 KVA	3 KVA
Topology	True On-line Double Conversion UPS		
Output Power Capacity	800 W	1600 W	2400 W
<b>INPUT</b>			
Phase	Single Phase		
Voltage Range*	FM - 110 ~ 280 VAC / FMI - 120 ~ 280 VAC		
Power Factor	0.99 @ nominal input voltage		
Current THD	<10%		
Battery	36 V	72 V/96 V	
Battery Charging	Constant Current & Constant Voltage Charger		
<b>OUTPUT</b>			
Nominal Output Voltage	220/230/240 VAC ± 1%		
Frequency	50 Hz ± 0.1 Hz		
Frequency Synchronisation	47.5 to 52.5 Hz		
THDv	<3% Linear Load, <5% Non Linear Load @ On-line mode		
<b>EFFICIENCY</b>			
AC/AC (Overall efficiency) - FM	>87%		
AC/AC (Overall efficiency) - FMI	>78%	>83%	
DC/AC (Inverter efficiency)	>85%		
ECO Mode	Up to 97%		
<b>OVERLOAD CAPACITY</b>			
105-110%	10 min		
111-130%	2 min		
131-150%	30 sec		
Communication	RS 232/USB/SNMP/MODBUS/Dry Contacts		
Operating Temp	0 - 40° C (With full Load)		
	41 - 50° C (Derated to 80%)		
<b>ELECTRICAL</b>			
Input Terminal Type	IEC Inlet		Terminal Block
Output Terminal	FM: 3xIndia type 6 Amps (1KL)	4xIndia type 6 Amps (2KL) - FM & FMI UPS	4xIndia type 6 Amps+TB (3KL) - FM & FMI UPS
dasfdas	FMI: 4xIndia type 6 Amps (1KL)		
Noise Level	<50 dBA		
<b>FEATURES</b>			
CVCF	Available		
Bypass	Available		
Display	LCD - Iconic		
<b>MECHANICAL</b>			
Ingress Protection (IP)	IP 20		
<b>STANDARDS</b>			
EMC	EN 62040 - 2		
Safety	EN 62040 - 1, IS 16242 - Part1		
Performance	IEC 62040 - 3		
Dimension for FM (D x W x H) in mm**	282 x 145 x 225	405 x 145 x 236	
Dimension for FMI (D x W x H) in mm**	426 x 190 x 336	426 x 190 x 346	
Net Weight in KG (FM/FMI)	4.9 / 15.3	7.9 / 21.6	8.3 / 24.3

\*FM - Floor Mount UPS/FMI - Floor Mount UPS with Isolation Transformer. \*\* Accuracy of dimension ± 2 mm.

**Note** : Product specifications are subject to change purely on company's discretion without any prior notice.



SCAN TO FIND OUR  
NEAREST BRANCH

# NUMERIC<sup>®</sup>

A Group brand |  **legrand<sup>®</sup>**

**Head Office:** 10th Floor, Prestige Center Court, Office Block,  
Vijaya Forum Mall, 183, N.S.K Salai, Vadapalani, Chennai - 600 026.

**Contact our 24x7 Customer Excellence Centre:**  
Email : [customer.care@numericups.com](mailto:customer.care@numericups.com) | Phone : 0484-3103266 / 4723266  
[www.numericups.com](http://www.numericups.com)