

NUMERIC[®]

A Group brand |  legrand[®]

PREMIUS EDGE

Single Phase Rack UPS

1-10 kVA

POWER OF ONE
NOW WITH AN
EDGE



NEW ENERGY
TO POWER



SUSTAINABILITY

CORPORATE

SOCIAL RESPONSIBILITY

Green management and sustainable supply chain: these concepts are part of Legrand's Corporate Social Responsibility, which is the company's commitment to drawing up a strategy and implementing it with practical actions aimed at socially responsible behaviour towards everything around it, such as people, things and environment. CSR involves the management of human resources, the organisation and division of labour and the management of natural resources. CSR aims to assess the impact that the company's actions and decisions have internally, but also externally, on the stakeholders and the environment.

BUSINESS ECOSYSTEM

or how Legrand interacts ethically with the whole ecosystem of its activities.

PEOPLE

or how Legrand engages with all of its employees and stakeholders.

ENVIRONMENT

or how Legrand intends to limit the Group's environmental impact.



CIRCULAR ECONOMY

We are committed to creating a system that involves all stakeholders to share values, objectives and actions in order to control and reduce the environmental impact of all our economic and production processes, reduce waste and environmental impact and transform what would once have been defined as “waste” into new resources. Controlling these aspects has an impact on the entire life cycle of the product, starting from the design of new concepts and new specifications for the materials the UPS is made of; this is possible through responsible design and procurement processes, with a strong focus on research and the use of innovative materials from the circular economy and alternative raw materials. When a product ends its life, all these materials can become high value-added resources that can be used in other production cycles.

DIGITALISATION



New information technologies allow us to reduce the use of several paper documents in favour of the digital format: in this way the information is always and everywhere accessible from a PC or smartphone and at the same time we can help prevent the felling of many trees. Digitisation also becomes an important driver of the circular economy, since it allows the use of tools for performance data analysis and preventive diagnostics, both useful for optimising the life cycle and durability of the product.

EFFICIENCY

Our R&D team is constantly working on the development of increasingly efficient UPSs that allow high and incremental performance with minimum energy dissipation; with regard to CO₂ emissions, we are implementing processes and products that represent an improvement in the percentage of carbon footprint compared to the past. But efficiency is not only synonymous with high performance.

For us, efficiency also means ecodesign: this implies that the UPS is designed to be easily repaired, maintained, and it's easy to separate its components. This means increasing the durability of our UPSs and the possibility of reusing and recycling them at the end of their life.



L'EPD/PEP



For each product family we draw up an EPD (Environmental Product Declaration) or PEP (Profil Environnemental Produit) in line with ISO 14025: it is a declaration that is a sort of environmental photograph of the product. The EPD is drawn up according to the concept of Life Cycle Assessment: it examines the environmental impact of a product throughout its life cycle, from the development of product specifications to the choice of materials to be used and the end-of-life destination of the product itself.

PREMIUS EDGE RACK

Structured Power Protection for Modern IT Infrastructure

Premius Edge Rack redefines single-phase UPS design by bringing Legrand's proven 1-10 kVA architecture into a structured rack-mount form factor. Designed for seamless integration into standard 19-inch server racks, it delivers reliable power protection while optimizing valuable IT floor space — aligning perfectly with servers, network switches, storage systems, and rack PDUs.



THE EDGE IN LEGACY

From trusted power to future-ready performance

Legrand has delivered reliable power solutions trusted across industries. Premium Edge Rack UPS continues this legacy — engineered for modern IT environments demanding efficiency, scalability, and structured integration.

SMARTER. SLEEKER. MORE SUSTAINABLE.

Across the 1-10 kVA range in a compact rack-mount form, Premium Edge Rack UPS brings together high-efficiency power, intelligent design, and the flexibility to grow with your infrastructure.

KEY HIGHLIGHTS



UP TO **95%**
POWER EFFICIENCY
18% ENERGY SAVINGS



COMPACT
2U / 3U
RACK FOOTPRINT



HIGH
CAPACITY CHARGER



FLEXI
DC BUS*

<3%

THDi



UNITY
POWER FACTOR



UP TO **4 UPS***
IN PARALLEL



IN-BUILT**
BATTERIES

*for 6 & 10 kVA only ** for 1 & 3 kVA only

THE EDGE IN PERFORMANCE

Engineered for critical uptime & efficiency

When business continuity cannot be compromised, performance becomes everything. **Premius Edge Rack** is engineered to deliver smarter efficiency — so your critical systems stay up, and costs stay down.

UP TO **95%**
POWER EFFICIENCY

Save up to 18% on energy costs, lowering both operational expenses and carbon footprint.

UNITY
POWER FACTOR

Delivers more active power across the 1-10 kVA range without derating.

<3%
THDI

Lower THDi improves power quality, enhances efficiency, extends equipment life, and reduces operational costs.



THE EDGE IN DESIGN

Thoughtfully designed for smarter spaces

RACK-MOUNT ARCHITECTURE (2U / 3U)

Integrates seamlessly into standard 19-inch server racks, eliminating floor space requirements and supporting structured cabling environments.

INTEGRATED PARALLEL CARD*

Supports capacity expansion and redundancy without external parallel modules.

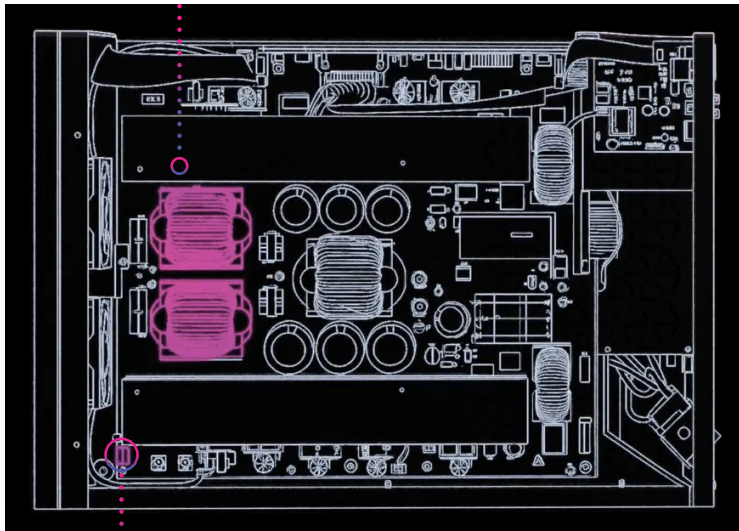
HARDWIRE / IEC OUTPUT OPTIONS

Supports both hardwire termination and IEC socket connections, adapting to different installation and load requirements.



* for 6 & 10 kVA only

PFC Circuit



Surge Protection Circuit

POWER FACTOR CORRECTION (PFC) CIRCUIT

The built-in PFC circuit with PF inductor improves input power factor and reduces harmonic distortion, ensuring cleaner power, higher efficiency, and less load on connected equipment.

SURGE PROTECTION CIRCUIT

It features a robust surge protection circuit that safeguards internal components and connected equipment from voltage spikes — ensuring safe and stable operation.

THE EDGE IN FLEXIBILITY

Adaptable to your runtime and growth needs

FLEXI

DC BUS*

Supports 16, 18, or 20 battery configurations (for 6 & 10 kVA models) to match backup requirements—optimizing sizing, reducing cost, and saving valuable floor space when fewer batteries are needed.

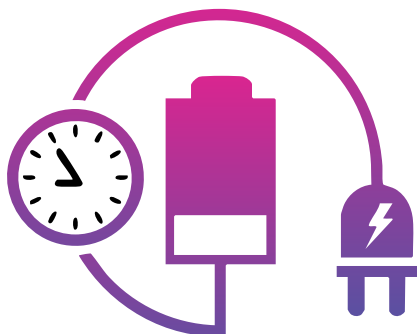
EXTERNAL BATTERY

CABINET SUPPORT

Enables flexible runtime scalability, supporting up to 3 external battery racks to meet increasing backup requirements.

10 AMPS

CHARGER



A standard 10A high-capacity charger enables faster battery recharge cycles, more available power, and reduced downtime between outages. It also supports both VRLA and Li-ion batteries, allowing seamless battery upgrades without replacing the UPS.

FASTER RECHARGE = REDUCED DOWNTIME

*for 6 & 10 kVA only

THE EDGE IN RELIABILITY

Designed for trust, built for compliance

N+X REDUNDANCY

N+X redundancy ensures continuous power availability by allowing maintenance or handling unexpected failures without compromising system reliability or uptime.

UP TO 4 UPS IN PARALLEL*

Parallel up to 4 UPS systems without a minimum load requirement — enabling seamless scalability and uninterrupted performance as infrastructure expands.



*for 6 & 10 kVA only

THE EDGE IN COMMUNICATION

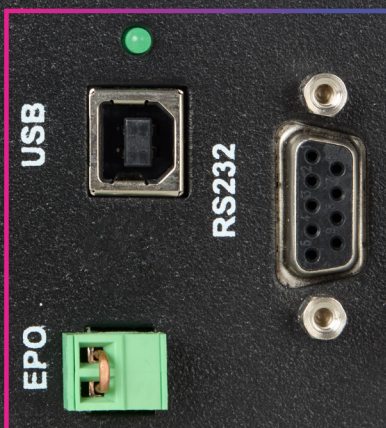
Enhancing Smart Monitoring & Remote Access

REAL-TIME ALERTS AND NOTIFICATIONS

The user-friendly LCD with 4 LED indicators displays real-time alerts, fault notifications, and internal temperature warnings — simplifying monitoring, enabling proactive maintenance, reducing downtime, and improving system reliability.

WIDE COMMUNICATION OPTIONS

Premius Edge Rack supports multiple connectivity options for seamless monitoring and control. With optional SNMP, internet, and network slot access, it enables remote supervision, easy diagnostics, and smooth integration with existing infrastructure.



THE EDGE IN APPLICATION

One UPS for every critical need

Premius Edge Rack is built for every environment where power continuity is a non-negotiable.

IT & SERVER ENVIRONMENTS ACROSS SEGMENTS



IT & Compute Infrastructure
Racks, servers, workstations,
edge devices



Communication & Security
VoIP, IP PBX, CCTV, access
control



Networking Systems Switches,
routers, firewalls, gateways



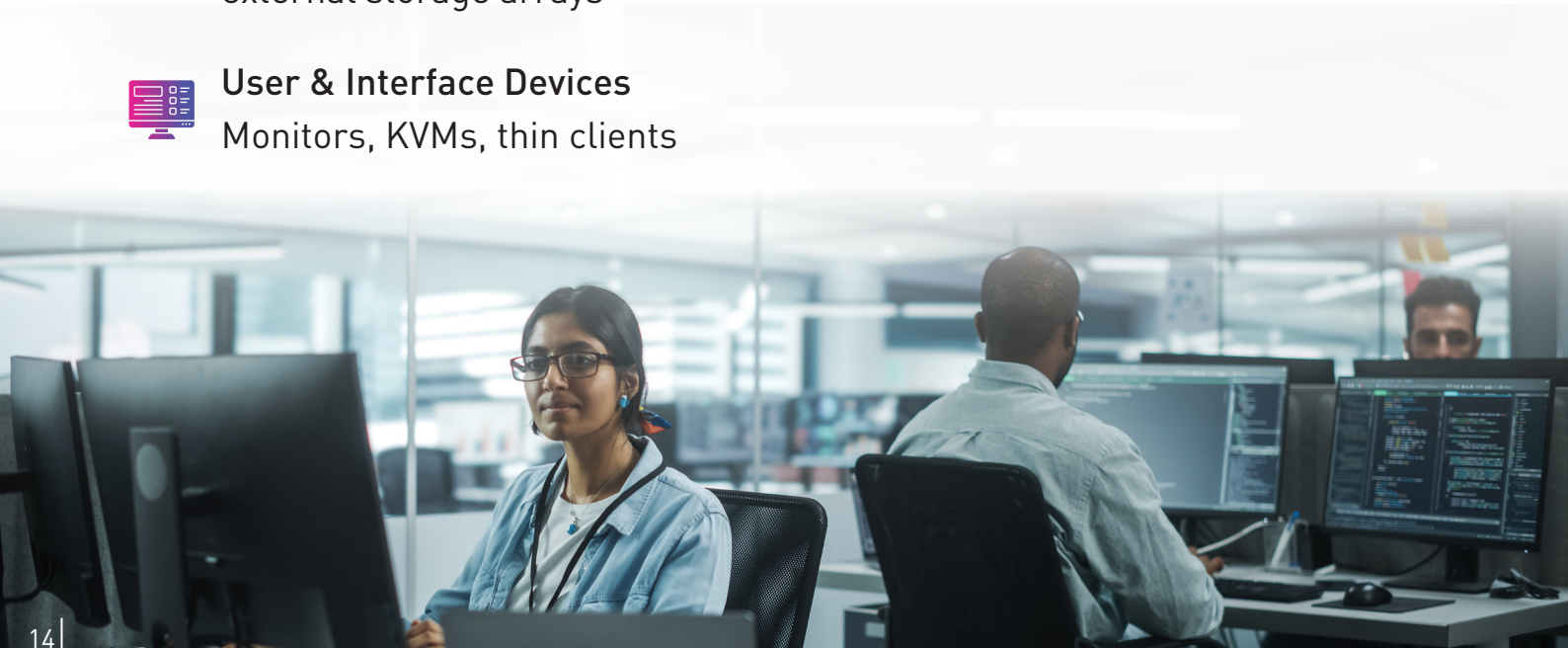
Critical & Automation Loads
POS systems, control panels,
IoT gateways



Storage Solutions
NAS, SAN,
external storage arrays



User & Interface Devices
Monitors, KVMs, thin clients



PREMIUS EDGE

1-10 kVA Rack Specification

Parameters	1 kVA	3 kVA	6 kVA	10 kVA
PID number	NU 72 01 819	NU 72 01 821	NU 72 01 823	NU 72 01 824
General characteristics				
Output Power Capacity	1000	3000	6000	10000
Technology	Online Double Conversion (VFI-SS-111)			
OVCD	Available			
Waveform	Sinusoidal			
Display panel	LCD display + LED panel			
Architecture	Rack			
Input characteristics				
Input voltage	230 VAC			
Input frequency range	40 - 70 Hz			
Voltage range	176 V - 264 VAC @ 100% load ± 5%		160 V - 300 VAC @ 100% load ± 5%	
	110 V - 300 VAC @ 50% load ± 5%		110 V - 300 VAC @ 50% load ± 5%	
THDi*	< 3% at full linear load and normal voltage			
Input power factor	0.99			
Connection	Terminal block	Terminal block	Terminal block	Terminal block
Output characteristics				
Output voltage	230 VAC (adjustable to 220 / 230 / 240 VAC) ± 1%			
Output frequency	50 / 60 Hz ± 0.1 Hz			
Frequency synchronisation	46 to 54 Hz		45 to 55 Hz	
Crest factor	03 : 01			
THD of output voltage	< 3% At full linear load		< 1% At full linear load	
	< 5% At full non-linear load		< 3% At full non-linear load	
AC-AC efficiency**	≥ 89% @ 100% Linear load	≥ 91% @ 100% Linear load	≥ 93% @ 100% Linear load	≥ 94% @ 100% Linear load
ECO mode	Available			
ECO mode efficiency	≥ 95% @ 100% load	≥ 97% @ 100% load	≥ 98% @ 100% load	≥ 99% @ 100% load
Convertible mode	Available			
Configurable bypass	Available			
Overload capacity in line mode	105 - 125% 1 mins, 126 - 130% 30 sec, >130% trip		105 - 110% 60 mins, 111 - 125% 10 mins, 126 - 150% 1 min, > 150% 0.5 sec	
Overload capacity in battery mode	105 - 125% 1 mins, 126 - 130% 10 sec, >130% trip		105 - 110% 10 mins, 111 - 125% 1 min, 126 - 150% 10 sec, > 150% 0.5 sec	
Batteries and battery charger characteristics				
Number of batteries	3	6	16 / 18 / 20	
Battery capacity	Depending on the capacity of external batteries			
Battery type	VRLA / Lithium-Ion			
Rated battery voltage	36 VDC	72 VDC	192 VDC /216VDC /240 VDC	
Battery charging current	10 A default ± 10% [7 AH - 100 AH selectable through display]			
Recharge time (to 90%)	9 hours			
Communication and management				
Communications ports	RS232 and USB			
Connector for network interface	SNMP / Modbus*** / Dry contacts (optional)			
Mechanical characteristics				
Dimensions for (W x D x H) (mm)	440 x 465 x 88.8 (2U)		440 x 707 x 133.3 (3U)	
Net weight in kg	7.3	10.2	15.9	16.9
Environmental characteristics				
Operating temperature	0°C to +40°C			
Protection index	IP 20			
Relative humidity (%)	0% to 90% (non-condensing)			
Storage temperature	- 10 °C to + 50 °C			
Noise level at 1 m (dBA)	< 55 dBA		< 45 dBA	
Reference directive and standards				
Safety	IS 16242 (Part 1): 2025 IEC 62040-1:2017 + AMD1:2021 + AMD2:2022 (CSV)			
EMC	IEC 62040-2:2016, EN IEC 62040-2:2018			
Performance	IEC 62040-3			
Certification	BIS, CE, RoHS, PEP****, REACH			

* For exact THD, please refer datasheet.
** For detailed efficiency refer data sheet.

*** For 6 and 10 kVA only.
**** Under process.

PREMIUS EDGE

1-3 kVA Rack Specification (IBB*)

Parameters	1 kVA	3 kVA
PID number	NU 72 01 820	NU 72 01 822
General characteristics		
Output power capacity	1000	3000
Technology	Online Double Conversion (VFI-SS-111)	
OVCD	Available	
Waveform	Sinusoidal	
Display panel	LCD display + LED panel	
Architecture	Rack	
Input characteristics		
Input voltage	230 VAC	
Input frequency range	40 - 70 Hz	
Input voltage range	176-264 VAC @100% load ±5%	110-300 VAC @50% load ±5%
Input power factor	0.99	
THDi	< 3% at full linear load and normal voltage	
Connection	Terminal block	
Output characteristics		
Output voltage	230 VAC (adjustable 220 / 230 / 240 VAC) ±1%	
Output frequency	50 / 60 Hz ± 0.1 Hz	
Frequency synchronisation	46 to 54 Hz	
Crest factor	03 : 01	
Output connection	3 Nos 6 A, IS1293	4 Nos 6 A, IS1293 & 1No 30 A, Terminal Block
AC-AC efficiency	≥89% @ 100% Load	≥91% @ 100% Load
ECO mode	≥95% @ 100% Load	≥97% @ 100% Load
Converter mode	Available	
Configurable bypass	Available	
Overload capacity in line mode	105 - 125% 1 mins, 126 - 130% 30 sec, > 130% trip	
Overload capacity in battery mode	105 - 125% 1 mins, 126 - 130% 10 sec, > 130% trip	
Batteries and battery charger characteristics		
Number of batteries	3	6
Battery capacity	7AH/9AH -Inbuilt	
Battery type	VRLA	
Rated battery voltage	36 VDC	72 VDC
Battery charging current	0.7 -1 Amps	
Recharge time	9 hours	
Communication and management		
Communications ports	RS232 and USB	
Connector for network interface	SNMP / Dry contacts (optional)	
Mechanical characteristics		
Dimensions for (W x D x H) (mm)	440 x 465 x 88.8 (2U)	440 x 625 x 133.3 (3U)
Net weight in kg	15.3	26.8
Environmental characteristics		
Operating temperature	0 °C to + 40 °C	
Protection index	IP 20	
Relative humidity (%)	0% to 90% [non-condensing]	
Storage temperature	- 10 °C to + 50 °C	
Noise level at 1 m [dBA]	< 55 dBA	
Compliance & Standards		
Safety	IS 16242 (Part 1): 2025 IEC 62040-1:2017 + AMD1:2021 + AMD2:2022 (CSV)	
EMC	IEC 62040-2:2016, EN IEC 62040-2:2018	
Performance	IEC 62040-3	
Certification	BIS, CE, RoHS, PEP**, REACH	

*In-built battery

**Under process.

ABOUT NUMERIC SERVICE

True certainty comes from the people, expertise, and trustworthy presence that support every moment of uptime. Numeric's Service Team unifies these strengths as one fully accountable service partner.

OUR EXPERIENCE:



33

SERVICE STORES



40+

YEARS SERVING CRITICAL
POWER NEEDS



17

WAREHOUSES



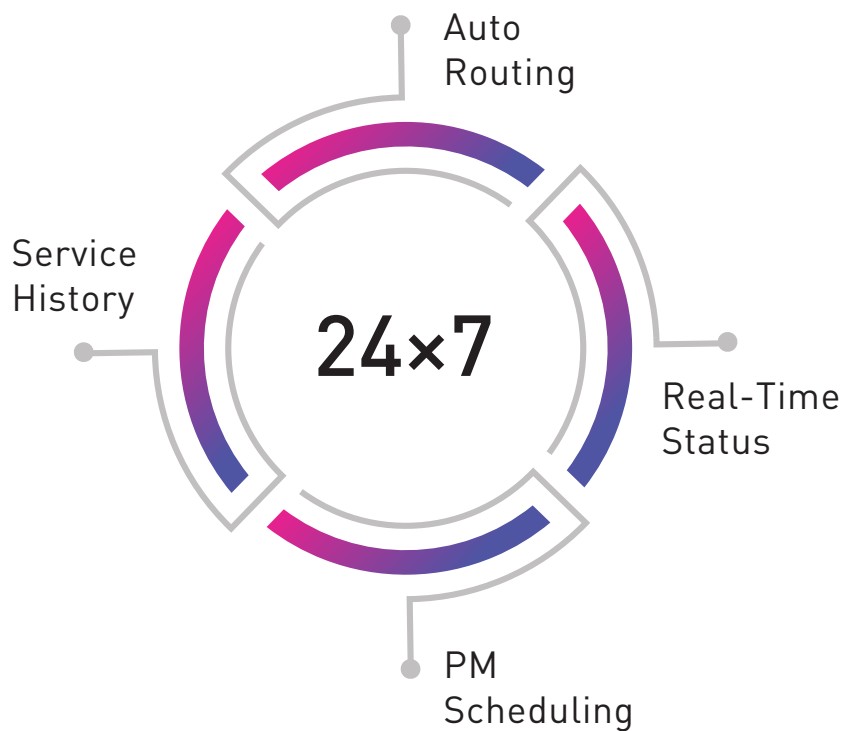
1 M+

PAN-INDIA INSTALLATION

CUSTOMER EXCELLENCE CENTRE

Certainty demands that help is always within reach. Numeric's Customer Excellence Centre (CEC) is your 24x7 digitalised support hub for every service need.

WHAT THE CEC DOES



Automated service routing to nearest technician



Complete service history & documentation



Preventive maintenance scheduling



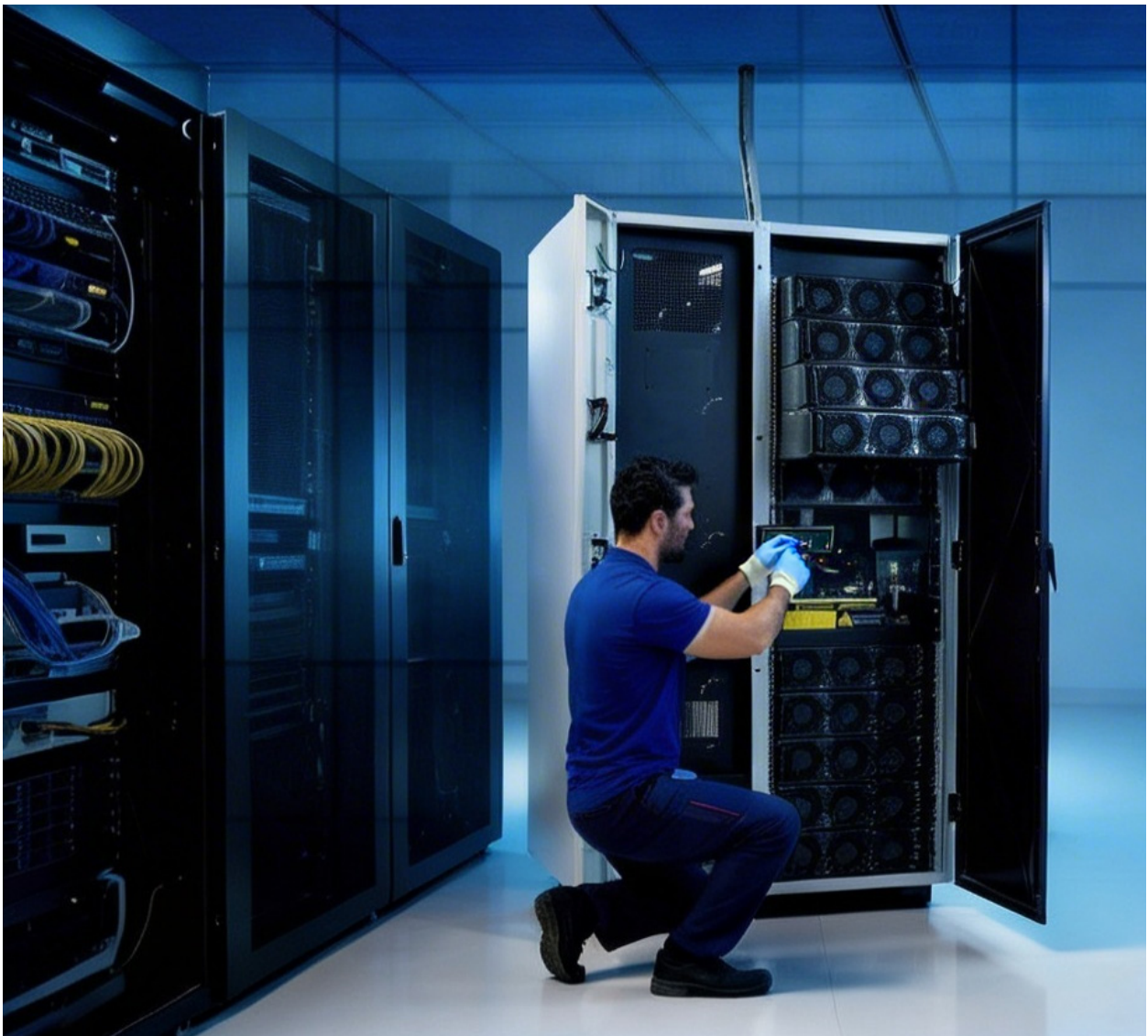
Real-time status updates throughout the service process



Virtual Remote Assistance for instant support

SERVICE AT A GLANCE

When power continuity is vital to your business, service cannot be an afterthought. Numeric's service portfolio is built to ensure uninterrupted continuity throughout your system's entire lifecycle—from the initial installation to the final upgrade.





INSTALLATION & COMMISSIONING

Professional site surveys and flawless installation.



EXTENDED WARRANTY

Get protection past the factory warranty—flexible 1–3-year terms.



ANNUAL MAINTENANCE CONTRACTS

Choose from Protect Plus or Protect Ultra plans with regular preventive maintenance and priority response.



BATTERY SOLUTIONS

VRLA and Lithium-ion battery options with professional guidance, installation, and replacement services.



BATTERY HEALTH MONITORING SYSTEM

24x7 cell-level monitoring with predictive analytics and proactive alerts.



REMOTE UPS MONITORING

Real-time diagnostics, ongoing performance tracking, and comprehensive reporting.



CUSTOMER EXCELLENCE CENTRE

24x7 digitalised support hub with automated service routing.



VIRTUAL REMOTE ASSISTANCE

Get instant, secure remote support for quicker troubleshooting and reduced downtime.



VALUE-ADDED SERVICES

Power Quality Audits, Energy Audits, and Electrical Infrastructure Health Audits.

CONTACT INFORMATION



04843103266
04844723266



+91 44 4656 5555



24 hours a day,
7 days a week



www.numericups.com





SCAN TO FIND OUR
NEAREST BRANCH

NUMERIC®

A Group brand |  **legrand®**

Head Office: 10th Floor, Prestige Center Court, Office Block,
Vijaya Forum Mall, 183, N.S.K Salai, Vadapalani, Chennai - 600 026.

Contact our 24x7 Customer Excellence Centre:

Email : customer.care@numericups.com | Phone : 0484-3103266 / 4723266
www.numericups.com

